



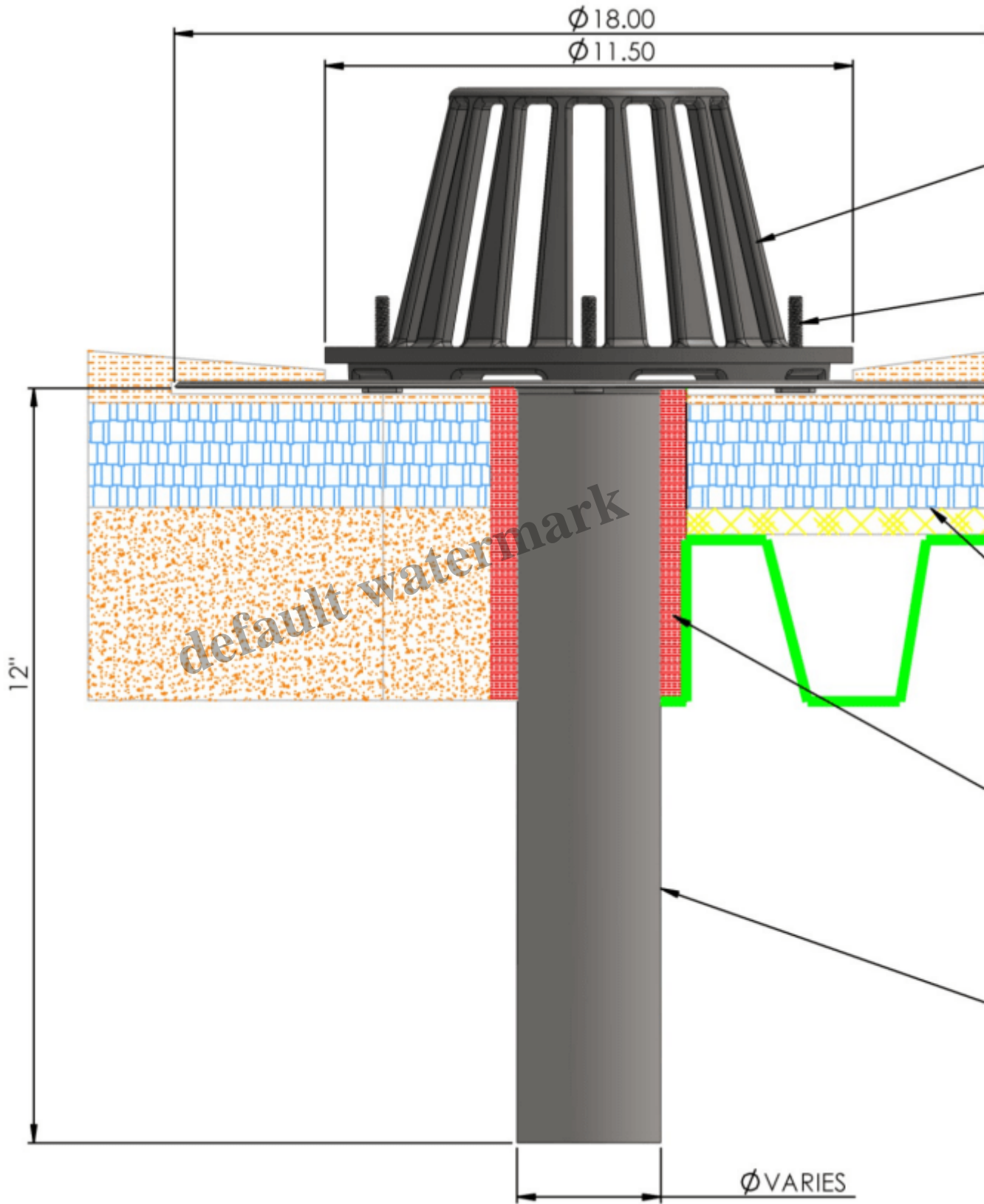
Channel Master Aluminum Drain— 4 studs With Clamping Ring

Description

Section Detail

1. Heavy duty Cast Aluminium Strainer with **Integral Clamping Ring**
2. Aluminium Mounting Studs welded to deck flange
3. Roof Gravel
4. Built Up Roofing Assembly
5. Thermal Barrier
6. Mineral Wool (By Others)
7. 2mm (0.80?) THK Seamless spun aluminium deck flange with integral outlet Aluminium Pipe.

(Also View – [Premium Quality Aluminium Drain](#))



Download Catalogue - [Channel Master](#)
[Aluminium Roof Drain](#)

Download QR

Date Created

February 22, 2022

Author

admin

default watermark